

Year Modified: 2007

Rated Drilling Depth

5 in. Drill Pipe: 30,000 ft (9,140 m)
 4-1/2 in. Drill Pipe: 35,000 ft (10,668 m)

Mast

Make, Type: Parco SL/B
 Height: 154 ft (46.9 m)
 Max. Hookload: 1.3 million lbs
 Racking Capacity: 5 in. drill pipe, 268 stands - 24,924 ft (7,596 m)

Drawworks

Make: OIME 3000E
 Rated Input: 3,000 hp (2,237 kW)
 Input Power: Three (3) GE 752 electric motors, each rated 1,000 hp (746 kW)
 Drilling Line: 1-5/8 in. (41.275 mm)

Traveling Equipment

Traveling Block: Ideco 750T
 Max. Load: 1.5 million lbs

Substructure

Make: Parco, Split-Level
 Clear Working Height: 28 ft (8.5 m)
 Setback Load: 812,000 lbs

Rotary Equipment

Top Drive: Varco TDS-4S, 650 ton
 Input Power: GE 752 Hi-torque series, rated
 Rotary Table: Oilwell Model B; 37-1/2 in. (952.5 mm)
 Input Power: Static
 Load Rating: Input from catworks
 1.3 million lbs

BOP System

Annular Preventer: One (1) 13-5/8 in. Hydril GK 5,000 psi
 One (1) 21-1/4 in. Hydril MSP 2,000 psi
 Ram Preventers: One (1) 13-5/8 in. Cameron Type U 10,000 psi single ram
 One (1) 13-5/8 in. Cameron Type U 10,000 psi double ram
 One (1) 21-1/4 in. Shaffer 2,000 psi single ram



Gensets

Engines: Five (5) Caterpillar D-399 diesel engines. 1,195 hp (891 kW) @ 1,200 rpm each.
 Generators: Five (5) KATO single-bearing generators each rated 1,050 kW (1,313 kVA); 600 VAC, 3-phase

Power Distribution

Gen. Control: Five (5) Ross Hill Model 1500
 SCR: Five (5) Ross Hill Model 1500 SCR bays
 MCC: 480 VAC (1,300 kVA), 208:120 VAC (450 kVA)

Mud Pumps

Pumps: Three (3) Emsco FB-1600 triplex pumps, each rated 1,600 hp (1,193 kW)
 Input Power: Each independently driven by two (2) GE-752 electric traction motors, each rated 1,000 hp (746 kW)

Mud Handling/Solids Control

Active Mud System: 1,500 bbls (238 m³)
 Shale Shakers: Five (5) Derrick FLC 504 4-panel shakers
 One (1) Derrick Hi-G Dryer; 1,200 gpm
 Degasser: Swaco; 500 gpm



Note: Equipment subject to client-specific requirements. No part of this document may be reproduced or transmitted without prior consent of Parker Drilling. Rev 02/17

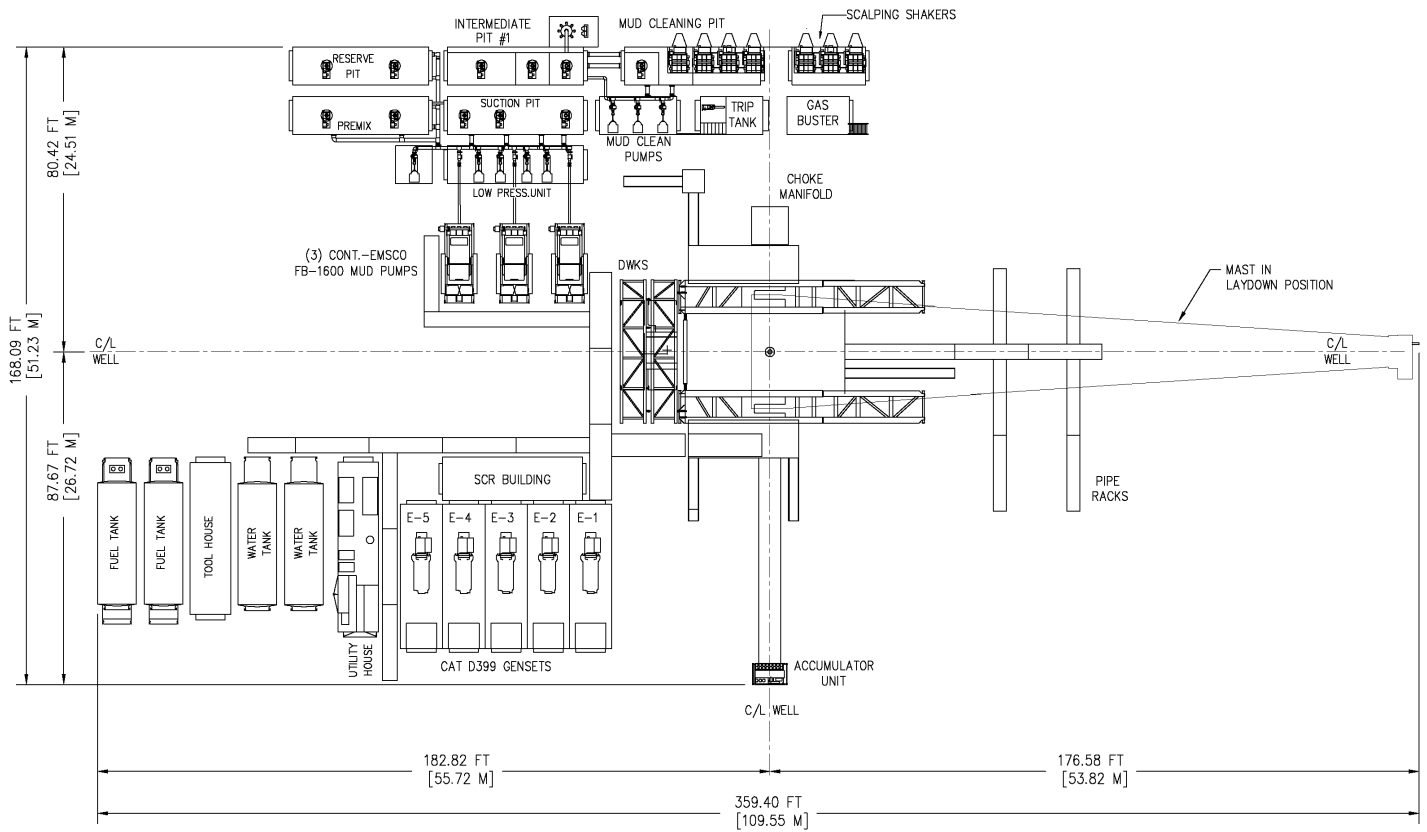
Energy. Well engineered.

Find out more at parkerwellbore.com

©2021 Parker Wellbore. All Rights Reserved.

2103 CityWest Blvd Suites. 300-400
 Houston, TX 77042

Rig Plot Plan



Note: Equipment subject to client-specific requirements. No part of this document may be reproduced or transmitted without prior consent of Parker Drilling. Rev 02/17