

**Year Modified:** 2009

**Rated Drilling Depth**

5 in. Drill Pipe: 25,000 ft (7,619 m)  
 4-1/2 in. Drill Pipe: 29,000 ft (8,838 m)

**Mast**

Make: Parco  
 Height and Type: 156 ft (47.5 m), cantilever  
 Max. Hookload: 1.5 million lbs  
 Racking Capacity: 5 in. drill pipe, 96 feet stand – 21,000 feet (6,402 m)

**Drawworks**

Make: Continental Emsco C-3  
 Rated Input: 3,000 hp (2,237 kW)  
 Input Power: Three (3) GE 752 motors, rated 1,000 hp (746 kW) each  
 Drilling Line: 1-3/4 in. (44.5 mm)

**Traveling Equipment**

Traveling Block: Ideco  
 Max. Load: 1.5 million lbs

**Substructure**

Make: Parco  
 Clear Working Height: 24 ft (7.3 m)  
 Setback Load: 975,000 lbs

**Rotary Equipment**

Top Drive: Canrig 1165E - 650 ton  
 Input Power: GE 752 Shunt Wound continuous amperage electric motor, 1,165 hp (868 kW)  
 Rotary Table: Continental Emsco 37-1/2" (952.5 mm)  
 Input Power: One (1) GE-752 direct current motor rated 1,000 hp  
 Static Load Rating: 1.4 million lbs

**BOP System**

Annular Preventers: One (1) 21-1/4 in. Hydril 2,000 psi  
 One (1) 13 5/8 in. Hydril 5,000 psi  
 Ram Preventers: One (1) 13-5/8 in. Cameron 10,000 psi Type U single rams  
 One (1) 13-5/8 in. Cameron 10,000 psi Type U double ram



**Gensets**

Engines: Five (5) Caterpillar 3512B diesel engines; 1,476 hp (1,101 kW) each  
 Generators: Five (5) Caterpillar SR4B generators, 1,050 kW (1,500 kVA) each

**Power Distribution**

Gen. Control: Five (5) Ross Hill Model 1400  
 SCR: Five (5) Ross Hill Model 1400 SCR bays  
 MCC: 600/480/220/127 volts

**Mud Pumps**

High Pressure System: One (1) 7,500 psi high pressure circulation system, dual mud lines to rig floor  
 Pumps: Two (2) Continental Emsco FC-2200 triplex pumps; each rated 2,200 hp (1,628 kW)  
 One (1) Continental Emsco FC-1600 triplex pump; rated 1,600 hp (1,193 kW)  
 Input Power: Two (2) GE-752 traction motors for FC-1600 pump rated at 800 HP each (597 KW)  
 Two (2) GE 752 Hi-torque motors for each FC-2200 pump rated at 1100 HP each (821 KW)

**Mud Handling/Solids Control**

Mud System Capacity: 1,980 bbls (315 m3)  
 Shale Shakers: Four (4) Derrick FLC 2000 shakers; 1,000 gpm each  
 One (1) Derrick Hi-G Dryer; 500 gpm  
 Degasser: Swaco vacuum-type

*Note: Equipment subject to client-specific requirements. No part of this document may be reproduced or transmitted without prior consent of Parker Drilling. Rev 5/16*



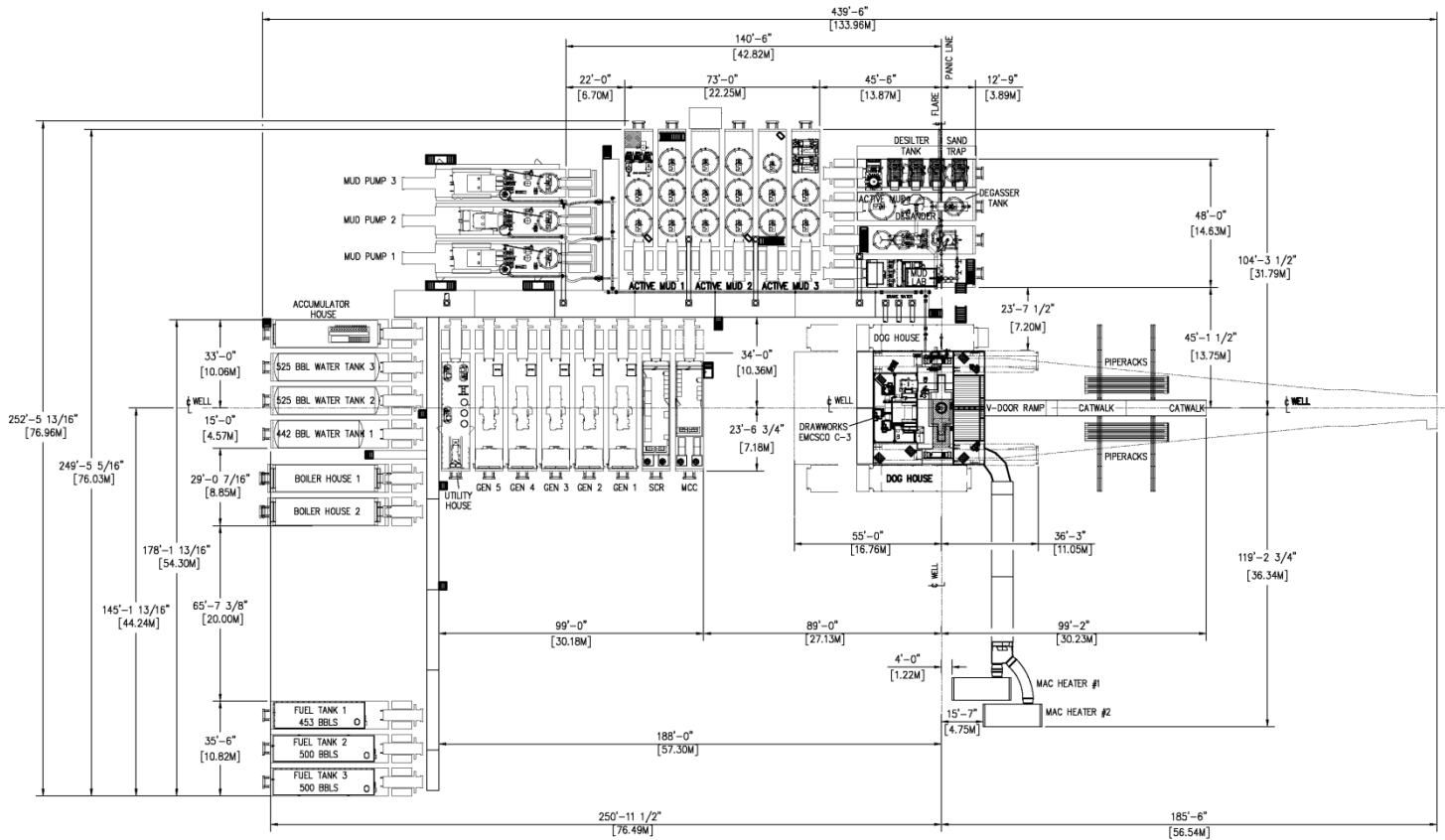
Energy. Well engineered.

Find out more at [parkerwellbore.com](http://parkerwellbore.com)

©2021 Parker Wellbore. All Rights Reserved.

2103 CityWest Blvd Suites. 300-400  
 Houston, TX 77042

**Rig Plot Plan**



*Note: Equipment subject to client-specific requirements. No part of this document may be reproduced or transmitted without prior consent of Parker Drilling. Rev 5/16*