

Year Modified: 2007

Rated Drilling Depth

5 in. Drill Pipe: 25,000 ft (7,620 m)

Mast

Make, Type: Parco, cantilever
 Height: 146 ft (44.5 m)
 Max. Hookload: 1.5 million lbs
 Racking Capacity: 5 in. drill pipe – 30,000 ft (9,144 m)

Drawworks

Make: OIME 3000E
 Rated Input: 3,000 hp (2,237 kW)
 Input Power: Three (3) GE-752 DC traction motors, each rated 1,000 hp (746 kW)
 Drilling Line: 1-5/8 in. (41.275 mm)

Traveling Equipment

Traveling Block: Ideco TB750
 Max. Load: 1.5 million lbs

Substructure

Make: Parco
 Clear Working Height: 27 ft (8.2 m)
 Setback Load: 975,000 lbs

Rotary Equipment

Top Drive: Tesco TD-500-HS, 500 ton
 Input Power: Detroit Diesel 16V-92
 Rotary Table: Ideco 37-1/2 in. (952.5 mm)
 Input Power: One (1) GE 752 800 hp (597 kW) DC electric motor
 Static Load Rating: 1.4 million lbs

BOP System

Annular Preventer: One (1) 21-1/4 in. Shaffer 2,000 psi
 One (1) 13-5/8 in. Hydril "GK" 5,000 psi
 Ram Preventers: Two (2) 21-1/4 in. Shaffer 2,000 psi single rams
 One (1) 13-5/8 in. Cameron Type U 10,000 psi single ram
 One (1) 13-5/8 in. Cameron Type U 10,000 psi double ram



Gensets

Engines: Six (6) Caterpillar D-398 diesel engines. 800 hp (597 kW) at 1,200 rpm each.
 Generators: Six (6) 800 kW (1,000 kVA) Kato generators

Power Distribution

Gen. Control: Six (6) Ross Hill Model 1400
 SCR: Five (5) Ross Hill Model 1400 SCR bays
 MCC: 600/460/220/110 volts

Mud Pumps

Pumps: Three (3) Continental Emsco FB-1600 triplex pumps; each rated 1,600 hp (1,193 kW)
 Input Power: Each pump driven by two (2) 1,000 hp (746 kW) GE 752 DC traction motors

Mud Handling/Solids Control

Active Mud System: 1,606 bbls (255 m³)
 Shale Shakers: Five (5) Derrick FLC-504, 4-panel shakers; 500 gpm each
 One (1) Derrick Hi-G Dryer; 1,200 gpm



Note: Equipment subject to client-specific requirements. No part of this document may be reproduced or transmitted without prior consent of Parker Drilling. Rev 12/11

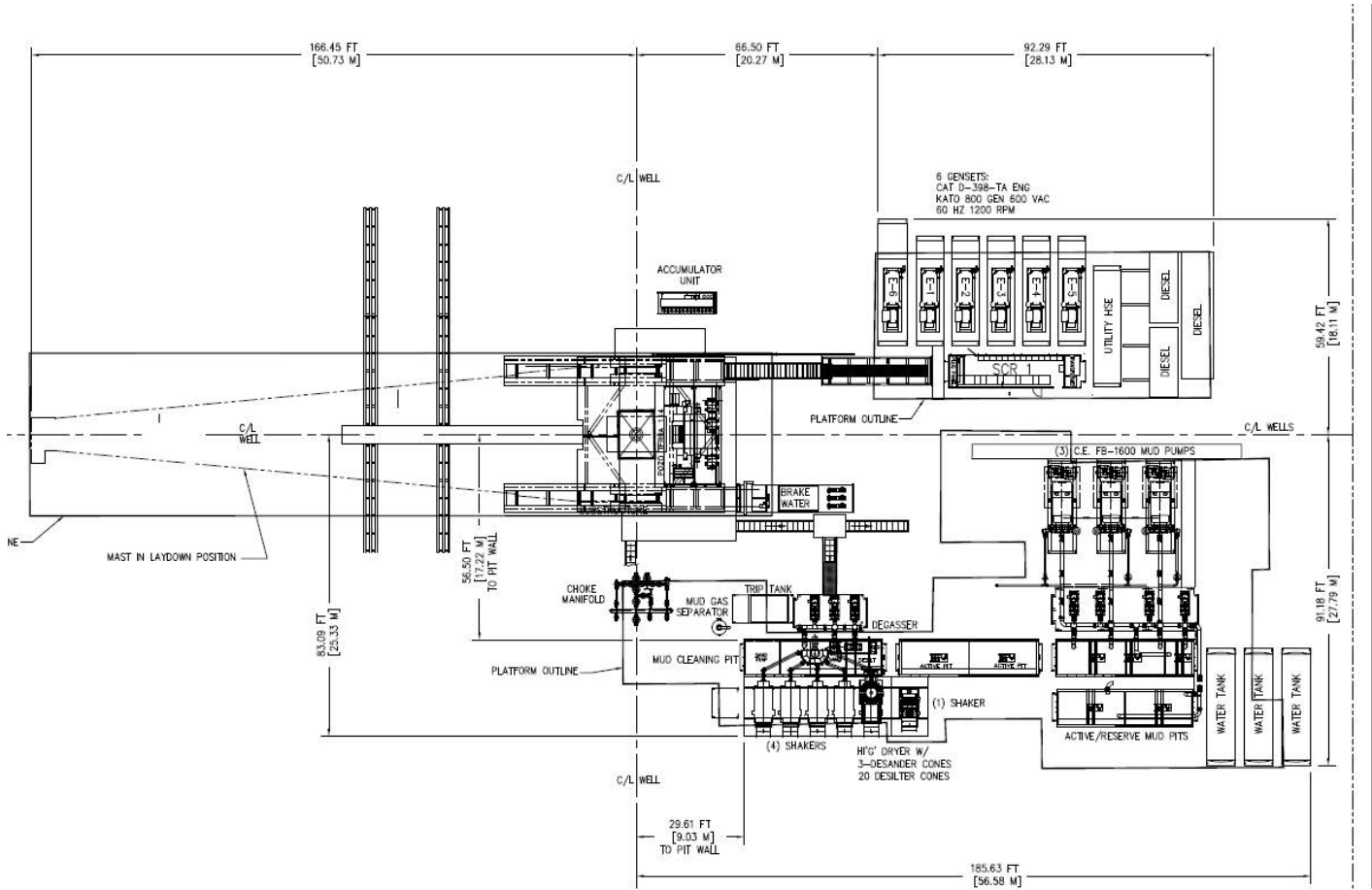
Energy. Well engineered.

Find out more at parkerwellbore.com

©2021 Parker Wellbore. All Rights Reserved.

2103 CityWest Blvd Suites. 300-400
 Houston, TX 77042

Rig 256 Layout



Note: Equipment subject to client-specific requirements. No part of this document may be reproduced or transmitted without prior consent of Parker Drilling. Rev 10/2014