

Year Modified: 2009

Rated Drilling Depth

5 in. Drill Pipe: 25,000 ft (7,620 m)
 4-1/2 in. Drill Pipe: 29,000 ft (8,839 m)

Mast

Make, Type: Parco, cantilever
 Height: 156 ft (47.5 m)
 Max. Hookload: 1.5 million lbs
 Racking Capacity: 5 in. drill pipe - 21,000 ft (6,400 m)

Drawworks

Make: Gardner Denver 3000E
 Rated Input: 3,000 hp (2,237 kW)
 Input Power: Three (3) EMD-79 direct current motors, max rating 1,000 hp (746 kW) each
 Drilling Line: 1-3/4 in. (44.5 mm)

Traveling Equipment

Traveling Block: Ideco
 Max. Load: 1.5 million lbs

Substructure

Make: Parco
 Clear Working Height: 28 ft. (8.5 m)
 Setback Load: 975,000 lbs

Rotary Equipment

Top Drive: Canrig 1175E-712 - 750 ton
 Input Power: GE 752 High torque shunt, continuous power 1,130 hp (840 kW)
 Rotary Table: Continental Emsco 37-1/2 in. (952.5 mm)
 Input Power: One (1) EMD-79 direct current motor rated 1,000 hp (746 kW)
 Static Load Rating: 1.4 million lbs

BOP System

Annular Preventer: One (1) 21-1/4 in. Hydril 2,000 psi
 One (1) 13-5/8 in. Hydril 5,000 psi
 Ram Preventers: One (1) 13-5/8 in. Cameron Type U 10,000 psi double ram
 One (1) 13-5/8 in. Cameron Type U 10,000 psi single rams



Gensets

Engines: Five (5) Caterpillar 3512B engines; 1,476 hp (1,101 kW) each
 Generators: Two (2) Caterpillar, 1,050 kW (1,500 kVA)
 Two (2) Kato, 1,400 kW (2,000 kVA)
 One (1) Kato, 1,365 kW (1,950 kVA)

Power Distribution

Gen. Control: Five (5) Ross Hill Model 1400
 SCR: Five (5) Ross Hill Model 1400 SCR bays
 MCC: 600/480/220/127 volts

Mud Pumps

High Pressure System: One (1) 7,500 psi high pressure circulation system, dual mud lines to rig floor
 Pumps: Three (3) Continental Emsco FC-1600 triplex pumps; each rated 1,600 hp (1,193 kW)
 Input Power: Two (2) EMD 79 traction motors for each pump, each rated 800 hp

Mud Handling/Solids Control

Active Mud System: 1,980 bbls (315 m3)
 Shale Shakers: Four (4) Derrick High "G" 4-panel shakers; 500 gpm each
 Derrick High "G" Dryer; 500 gpm



Note: Equipment subject to client-specific requirements. No part of this document may be reproduced or transmitted without prior consent of Parker Drilling. Rev 03/17

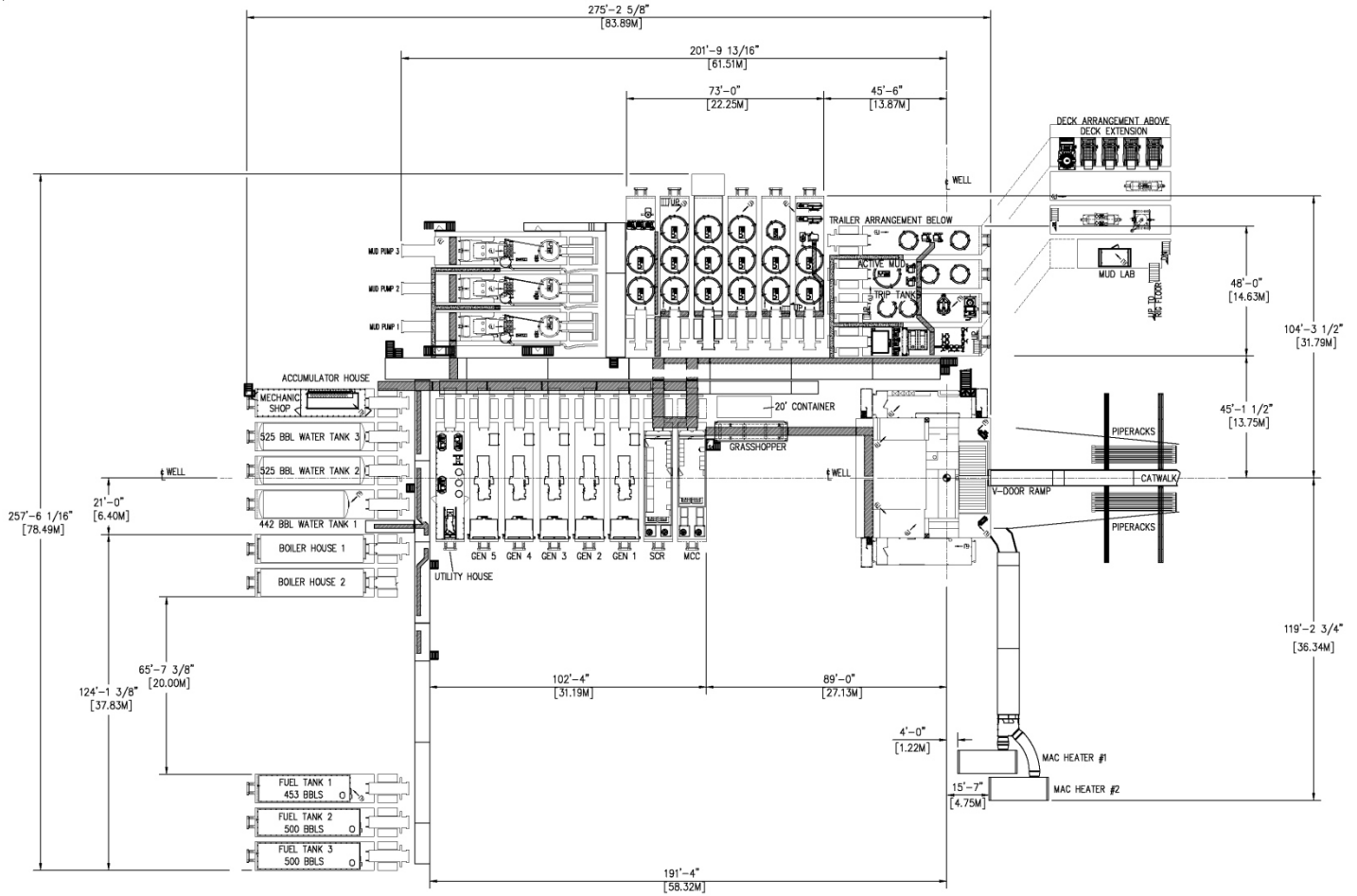
Energy. Well engineered.

Find out more at parkerwellbore.com

©2021 Parker Wellbore. All Rights Reserved.

2103 CityWest Blvd Suites. 300-400
 Houston, TX 77042

Rig Plot Plan



Note: Equipment subject to client-specific requirements. No part of this document may be reproduced or transmitted without prior consent of Parker Drilling. Rev 03/17