

**Year Modified** 2009

**Mast**

Type: Cantilever  
 Height: 156 ft.  
 Max Allowable Static Hook Load: 1,500,000 lbs.  
 Racking Capacity (5in DP): 21,000 ft.

**Drawworks**

Drawworks Make/Model: Gardner Denver E-3000  
 Total Input Power: 3,000 hp  
 Number of Motors: 3  
 Drilling Line: 1-3/4 in.

**Traveling Equipment**

Traveling Block Make/Model: Ideco 750  
 Hoisting Capacity: 750 tons

**Substructure**

Type: Sling-Shot  
 Rig Floor Height: 32 ft.  
 Clear Working Height: 28 ft.  
 Setback Load: 975,000 lb.

**Rotary Equipment**

Top Drive Make/Model: Canrig 1165 E  
 Hoisting Capacity: 650 tons  
 Maximum Continuous Torque: 50,600 ft.-lbs.  
 Total Input Power: 1,130 hp  
 Number of Motors: 1  
 Rotary Table Make/Model: Continental Emsco T-3750  
 Size: 37-1/2 in.  
 Static Load Rating: 700 tons

**BOP System**

Annular Preventer Make/Model: Hydril GK  
 Size: 13-5/8 in.  
 Pressure Rating: 5,000 psi  
 Annular Preventer Make/Model: Hydril MSP  
 Size: 21-1/4 in.  
 Pressure Rating: 2,000 psi  
 Ram Preventers Make/Model: Cameron Type U - Single  
 Size: 13-5/8 in.  
 Pressure Rating: 10,000 psi  
 Ram Preventers Make/Model: Cameron Type U – Double  
 Size: 13-5/8 in.  
 Pressure Rating: 10,000 psi



**Gensets**

Engines Make/Model: CAT 3512-DITA Series B  
 Make/Model: Kato 6P6-3300 (3) & CAT SR4B (2)  
 Number of Gensets: 5

**Power Distribution**

Gen. Control Make/Model: Ross Hill - General Electric  
 Power Distribution: AC 480V & 600V

**Mud Pumps**

Pump Make/Model: Continental Emsco FC-1600  
 Total Input Power per Pump: 1,600 hp  
 Pressure Rating: 7,500 psi  
 Number of Pumps: 3

**Mud Handling/Solids Control**

Total Mud Volume: 2,280 bbls  
 Shale Shakers Make/Model: Derrick FLC-2000  
 Number of Shakers: 5  
 Desander Make/Model: Derrick In-Line 2-Cone  
 Number of Desanders: 1  
 Desilter Make/Model: Derrick Round 20-Cone  
 Number of Desilters: 1  
 Degasser Make/Model: Swaco TOGA System  
 Number of Degassers: 1

**Moving System**

Type: N/A  
 Load Capacity: N/A lbs.

**Other**

Centrifuge: Two (2) Derrick DE-1000



*Note: Equipment subject to client-specific requirements. No part of this document may be reproduced or transmitted without prior consent of Parker Wellbore 09/23*

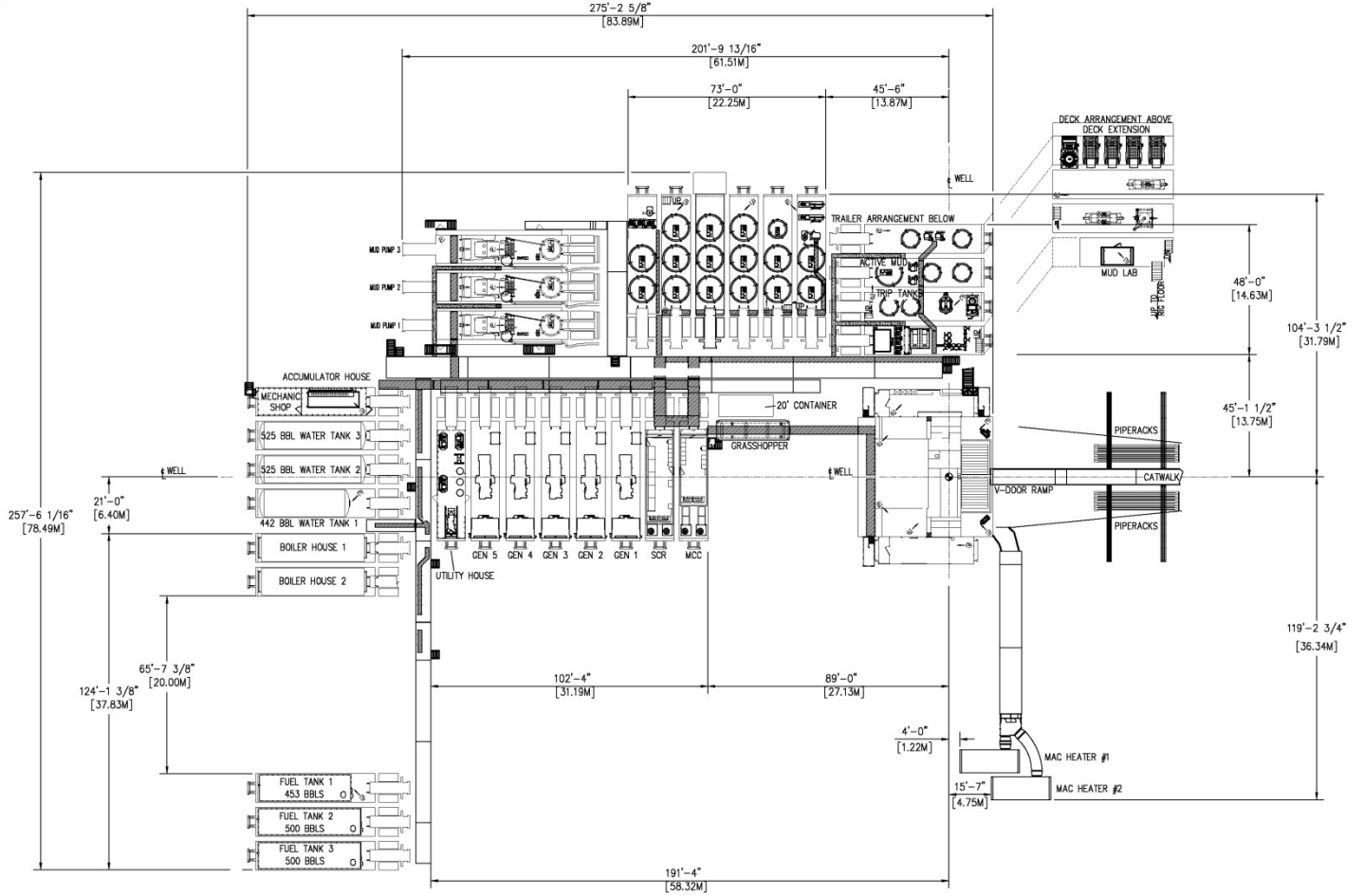
**Energy. Well engineered.**

Find out more at [parkerwellbore.com](http://parkerwellbore.com)

©2021 Parker Wellbore. All Rights Reserved.

2103 CityWest Blvd Suites. 300-400  
 Houston, TX 77042

**Rig Plot Plan**



*Note: Equipment subject to client-specific requirements. No part of this document may be reproduced or transmitted without prior consent of Parker Wellbore 09/23.*