

Year Built: 2006

Rated Drilling Depth
 5 in. Drill Pipe: 22,000 ft (6,700 m)
 4-1/2 in. Drill Pipe: 14,750 – 23,000 ft (4,500 m – 7,000 m)

Mast
 Make: Bomco JJ450/46-K
 Height and Type: 152 ft (46.5 m), Cantilever
 Max. Hookload: 1,000,000 lbs (4,500 kN)

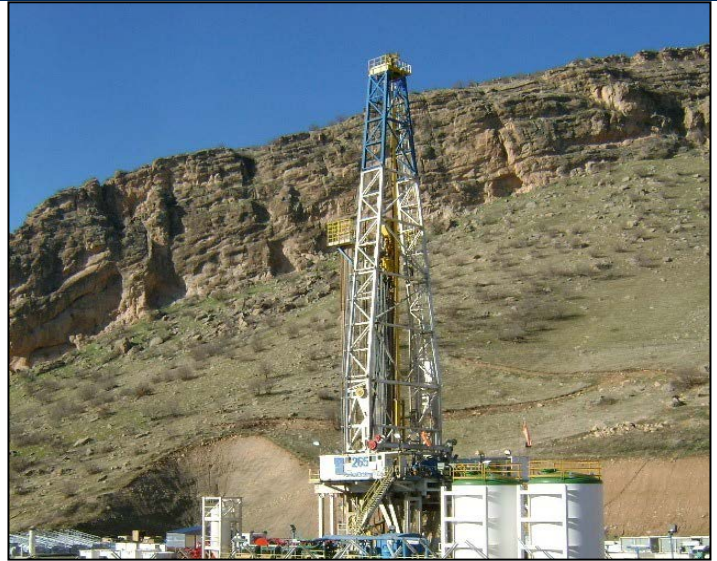
Drawworks
 Make: Bomco JC-70DB7
 Rated Input: 2,000 hp (1,470 kW)
 Input Power: Two (2) 1,150 hp (845 kW) AC electric motors
 Drilling Line: 1-1/2 in. (38 mm)

Traveling Equipment
 Traveling Block: Bomco YC-450
 Max. Load: 1,000,000 lbs (4,500 kN)
 Swivel: Lanzhou LS-National Oilwell Model SL450-5
 Max. Load: 1,000,000 lbs (4,500 kN)

Substructure Make:
 Type: Bomco DZ450/10.5-X
 Floor Height: Swing Lift 34.5 ft (10.5 m)
 Clear Working Height: 29.5 ft (9 m)
 Max. Rotary Load: 1,000,000 lbs (4,500 kN)
 Setback Load: 495,000 lbs (2,200 kN)

Rotary Equipment
 Top Drive: National Oilwell Varco TDS-11SA 800 hp, two (2) 400 hp (298 kW) AC motors
 Input Power: Bomco ZP 375Z 37-1/2 in. (952.5mm)
 Rotary Table: One (1) 1,150 hp AC motor (845 kW)
 Input Power: 1,630,000 lbs (7,250 kN)
 Static Load Rating:

BOP System
 Annular Preventer: One (1) Hydril GK 13-5/8"-5M
 One (1) Hydril MSP 21-1/4"-2M One (1) Cameron Type "U"
 Ram Preventers: 13-5/8"-10M single ram preventer One (1) Cameron Type "U"
 13-5/8"-10M double ram preventer



Gensets

Engines:

Generators:

Power Distribution

Gen. Control:

VFD:

MCC:

Mud Pumps

Pumps:

Input Power:

Mud Handling/Solids Control

Mud System Capacity: 2,272 bbls (361 m³)

Shale Shakers: Three (3) Derrick Flo-Line Cleaner Model 2/48-90F-3TA, 3-panel shakers; 525 gpm each

Mud Cleaner: One (1) Derrick FLC 2000 Model 2/48-90F-3TA
 Combination Desander (1,500 gpm),
 Desilter (1,600 gpm)

Degasser: Vacuum Degasser, 1,000 gpm (4 m³/min)



Note: Equipment subject to client-specific requirements. No part of this document may be reproduced or transmitted without prior consent of Parker Drilling. Rev 10/2014

Energy. Well engineered.

Find out more at parkerwellbore.com

©2021 Parker Wellbore. All Rights Reserved.

2103 CityWest Blvd Suites. 300-400
 Houston, TX 77042

Design Features (All main components conform to API specifications)

Mast & Substructure

- Mast and substructure raise and lower by raising lines using hoisting power generated from the drawworks.
- Mast is completely assembled at ground level.
- Torque tubes are integrated into the mast structure for the dissipation of torque generated by the top drive during operation.
- Substructure's slingshot design allows floor equipment to be installed in its lower position and swing up in place during the raising operation. Subsequently, it is all lowered simultaneously as the rig is lowered.
- Maximum package for transportation for either the mast or substructure is 44.3 feet in length x 10.5 feet in width x 8.5 feet in height. Maximum transportation load is the drawworks at 99,208 lbs (45 mT).

Mud Pumps

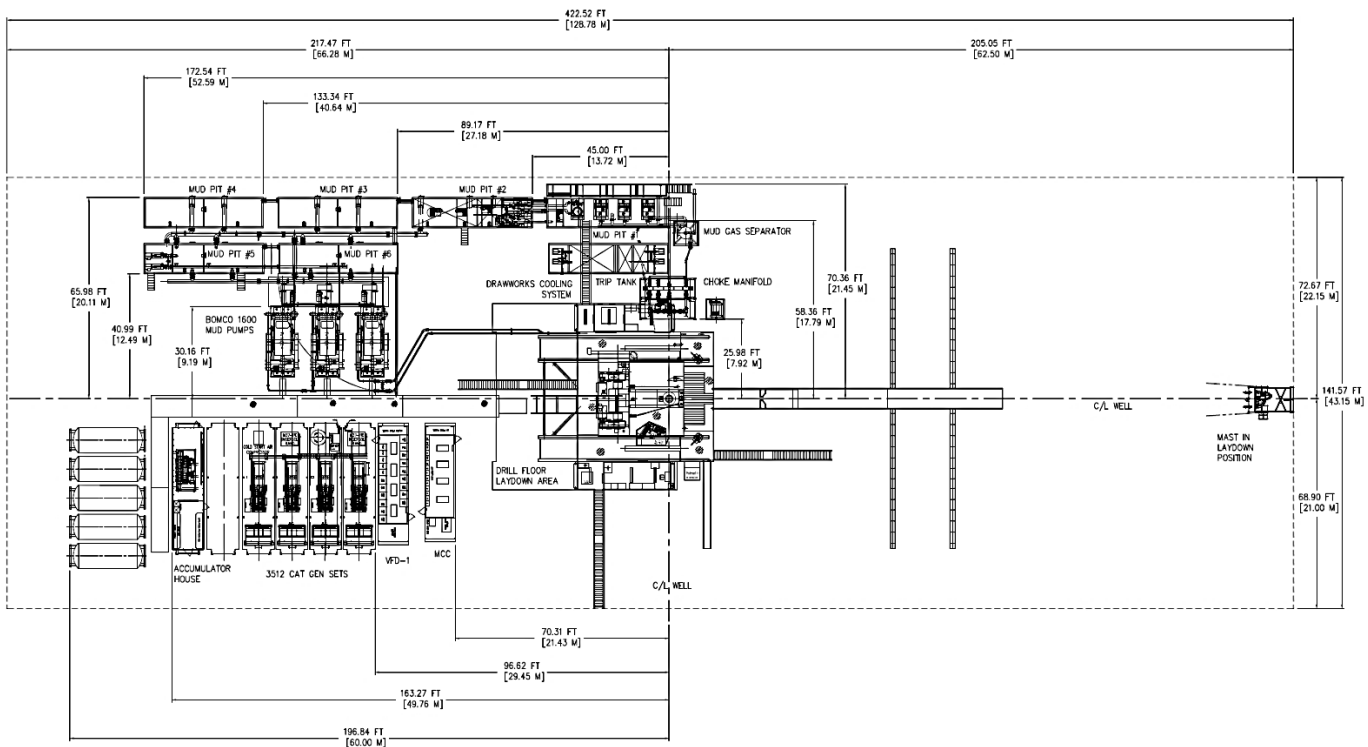
- Three Bomco F-1600 1600 HP triplex mud pump packages belt driven by two (2) 1,150 HP rated AC electric motors. During normal working conditions, two mud pumps are used. Third pump is optional and can be used for additional hydraulic horsepower output to satisfy well program requirements.

Drawworks

- Digital closed-loop controls and dynamic (regenerative) braking systems take full advantage of integrated automation during tripping operations and zero-speed hovering.
- Automatic driller capability.
- Drawworks features a simple mechanical transmission and reliable controls.
- Brake system is a combination of hydraulic disc brakes and dynamic regenerative braking.
- Motor, gearbox, drum, lubricating system and disc brake are installed on skid as one piece for ease of transportation.
- Digital control of drawworks parameters, such as hook speed, hook position, automatic drilling and dynamic braking. Drawworks' air and hydraulic systems controlled by the programmable logic controller (PLC) system in driller's console.

Controls

- Intelligent driller control uses advanced variable frequency drive (VFD) control technologies and integrated PLCs. Driller monitors and operates essential drilling functions from a driller's chair located on the rig floor.



Note: Equipment subject to client-specific requirements. No part of this document may be reproduced or transmitted without prior consent of Parker Drilling. Rev 10/2014