

AC Variable Frequency Drive Arctic Land Drilling Rig

Year Built: 2011

Mast

Type: Cantilever
 Height: 152 ft.
 Max. Allowable Static Hook load : 750,000 lbs.
 Racking Capacity (5 in DP): 20,000 ft.

Drawworks

Drawworks Make: NOV ADS-10SD
 Total Input Power: 2,300 hp
 Number of Motors: 2
 Drilling Line: 1-3/8 in.

Traveling Equipment

Traveling Block Make/Model: NOV
 Rated Load: 375 tons

Substructure

Type: Custom
 Rig Floor Height: 45 ft.
 Clear Working Height: 21 ft.
 Setback Capacity: 500,000 lbs.

Rotary Equipment

Top Drive Make/Model: NOV TDS11 - SAE
 Hoisting Capacity: 500 tons
 Maximum Continuous Torque: 58,800 ft.-lb.
 Total Input Power: 1,200 hp
 Number of Motors: 2
 Rotary Table Make/Model: NOV RST
 Size: 37-1/2 in.
 Static Load Rating: 375 tons

BOP System

Annular Preventer Make/Model: NOV Shaffer
 Size: 13-5/8 in.
 Pressure Rating: 5,000 psi
 Annular Preventer Make/Model: Hydril MSP
 Size: 21-1/4 in.
 Pressure Rating: 2,000 psi
 Ram Preventer Make/Model: NOV Single T3 Model 6012
 Size: 13-5/8 in.
 Pressure Rating: 5,000 psi
 Ram Preventer Make/Model: NOV Double T3 Model 6012
 Size: 13-5/8 in.
 Pressure Rating: 5,000 psi



Gensets

Engine Make/Model: CAT 3516C-HD
 Generator Make/Model: Kato 2500 kVA
 Number of Gensets: 3

Power Distribution

Gen. Control Make/Model: Woodward GCP-31
 Power Distribution: AC 600V

Mud Pumps

Pump Make/Model: NOV 12-P-160
 Total Input Power per Pump: 1,600 hp
 Pressure Rating: 5,000 psi
 Number of Pumps: 2

Mud Handling/Solids Control

Total Mud Volume: 1,663 bbls
 Shale Shaker Make/Model: Derrick Dual Pool 628
 Number of Shakers: 3
 Desilter Make/Model: Derrick Round 16-Cone
 Number of Desilters: 1
 Degasser Make/Model: Derrick Vacu-Flo 1200
 Number of Degassers: 1

Moving System

Type: Self-Propelled Wheeled System
 Load Capacity: Drill Module: 4,280,000 lbs.
 Mud Module: 3,520,000 lbs.
 Utility Module: 3,520,000 lbs.

Other

Power Generation
 Emissions: Tier 4 Compliant After Exhaust System



Note: Equipment subject to client-specific requirements. No part of this document may be reproduced or transmitted without prior consent of Parker Drilling. Rev 0923

Energy. Well engineered.

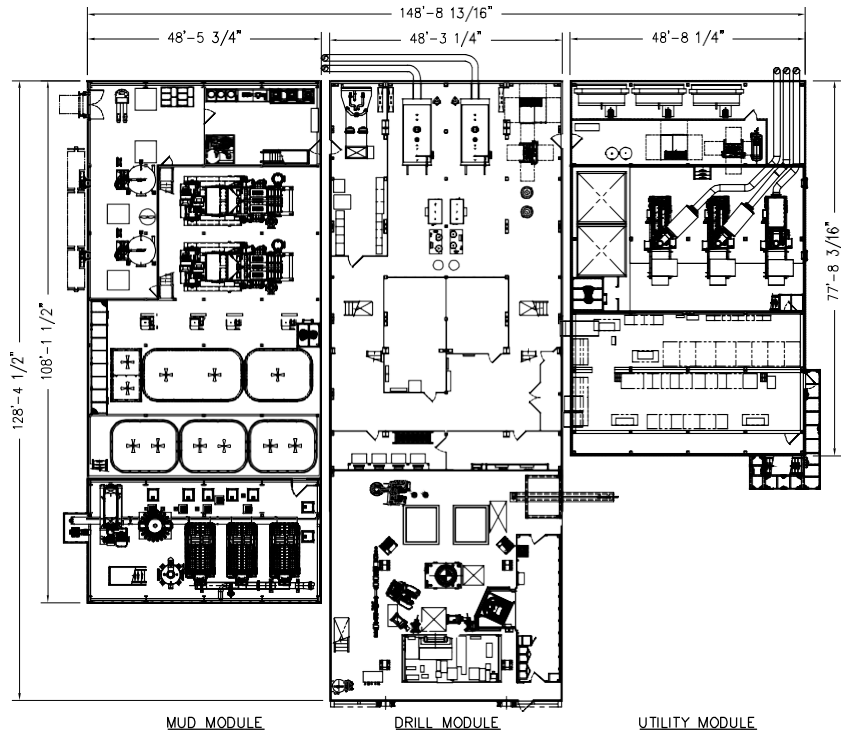
Find out more at parkerwellbore.com

©2021 Parker Wellbore. All Rights Reserved.

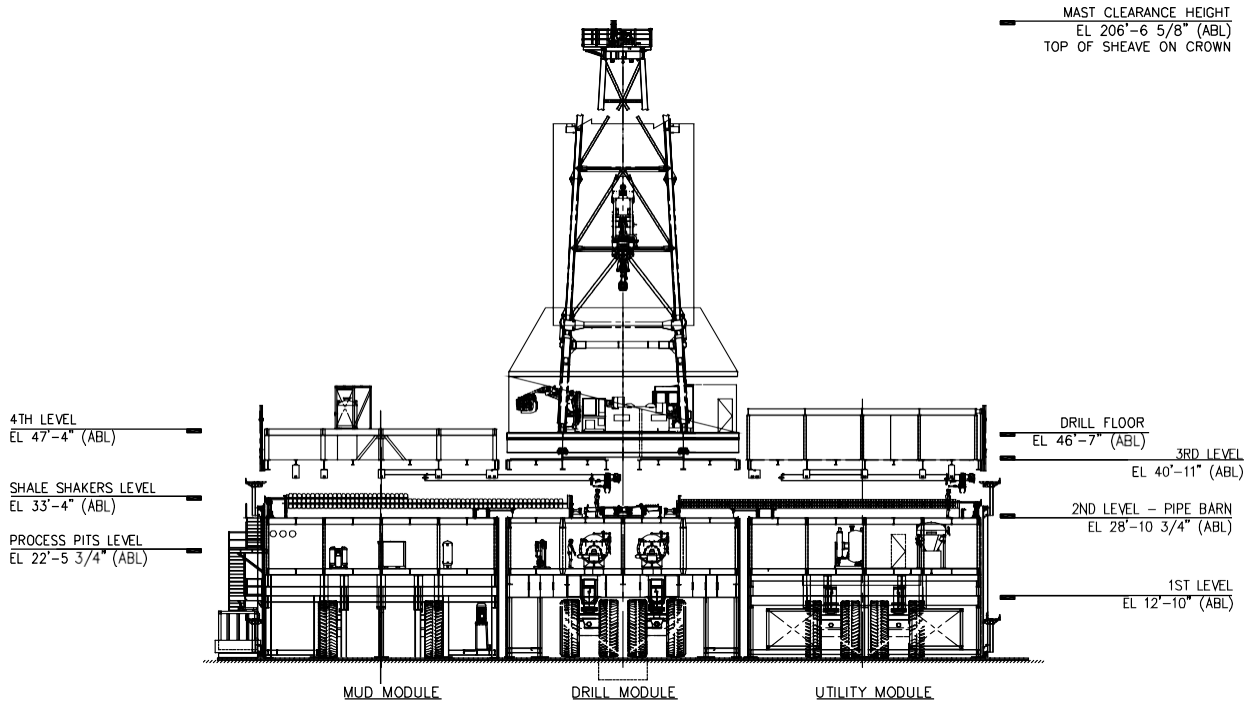
2103 CityWest Blvd Suites. 300-400
 Houston, TX 77042



AC Variable Frequency Drive Arctic Land Drilling Rig



GENERAL ARRANGEMENT - PLAN VIEW



GENERAL ARRANGEMENT - AFT ELEVATION

Note: Equipment is subject to client-specific requirements. No part of this document may be reproduced or transmitted without the prior consent of Parker Wellbore. Rev 09/23

Energy. Well engineered.

Find out more at parkerwellbore.com

2103 CityWest Blvd Suites. 300-400
Houston, TX 77042