

Year Built: 2011

Rated Drilling Depth
23,000 ft

Mast
Height: 152 ft (49 m) cantilever
Max. Hookload: 750,000 lbs
Racking Capacity: 5 in. drill pipe, 90 ft stand - 20,000 ft (6,100 m)

Drawworks
Make: National Oilwell Varco ADS-10SD
Rated Input: 1,150 hp (858 kW)
Input Power: Two (2) AC motors, each rated 1,150 hp (858 kW)
Drilling Line: 1-3/8 in.

Traveling Equipment
Traveling Block: National Oilwell Varco
375 ton closed couple block (Yo Yo)
Max. Load: 750,000 lbs

Substructure
Clear Working Height: 21 ft (6.4 m)
Setback Load: 500,000 lbs

Rotary Equipment
Top Drive: National Oilwell Varco TDS-11SA,
500 ton, 800 hp
Input Power: Two (2) 400 hp AC electric motors
Rotary Table: National Oilwell Varco 37-1/2 in.
(952.5 mm) RST 375 ton
Input Power: Four (4) 10-950 hydraulic motors
Static Load Rating: 750,000 lbs

BOP System
Annular Preventer: One (1) 13-5/8 in., 5,000 psi
National Oilwell Varco Shaffer
Spherical
Ram Preventers: One (1) 13-5/8 in., 5,000 psi
National Oilwell Varco
Double T3 Model 6012 Ram
One (1) 13-5/8 in., 5,000 psi
National Oilwell Varco T3
Single T3 Model 6012 Ram



Gensets
Engines: Three (3) Caterpillar 3516C-HD
diesel engines. 2,150 bhp (1,603
kW) @ 1,900 rpm each.
Generators: Three (3) Kato 2500 kVA generators
@ 1,200 rpm (1,500 kW, 600 V)

Power Distribution
Gen. Control: Woodward GCP-31
Woodward 2301D Speed Control
Basler DECS-200 Voltage Regulator

Mud Pumps
Pumps: Two (2) National Oilwell Varco 12-P-
160 triplex pumps, each rated 1,600
hp (1,193 kW)
Input Power: Each independently driven by two (2)
800 hp (597 kW) engines

Mud Handling/Solids Control
Active Mud System: 785 bbls (125 m³)
Shakers: Three (3) Derrick Dual Pool 628
Linear Shakers
Desilter: One (1) Derrick round 16-cone
desilter
Degasser: Derrick Vacu-Flo 1200

Rig Moving System
Columbia Industries Self-Propelled Wheeled System
Capacity: Drill Module – 4,280,000 lbs at 3 mph. Mud Module
– 3,520,000 lbs at 3 mph. Utility Module – 3,520,000 lbs at 3
mph. Gradeability: approximately 7% at reduced speed.



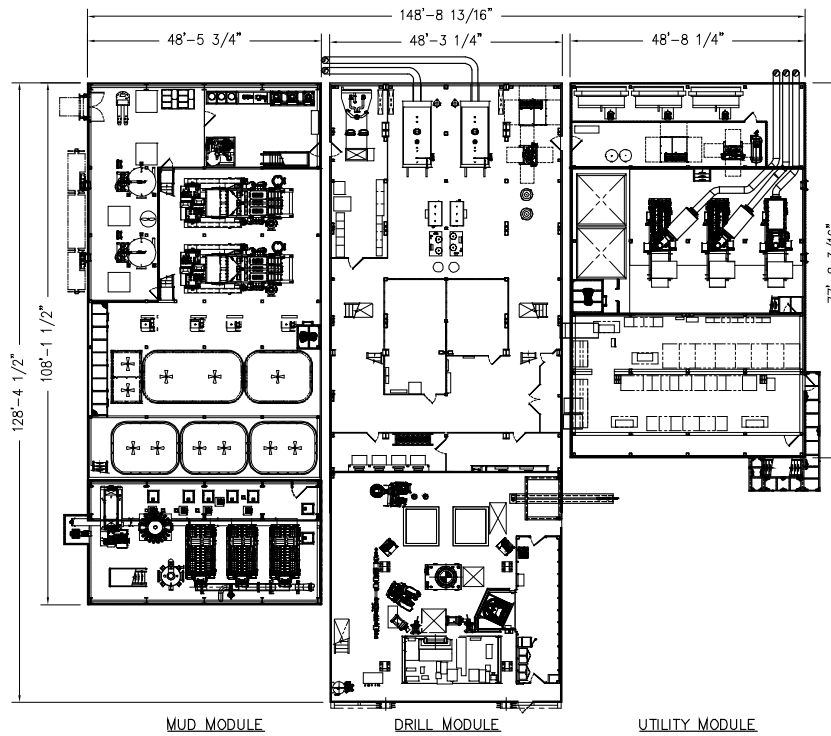
Note: Equipment subject to client-specific requirements. No part of this document may be reproduced or transmitted without prior consent of Parker Drilling. Rev 03/19

Energy. Well engineered.

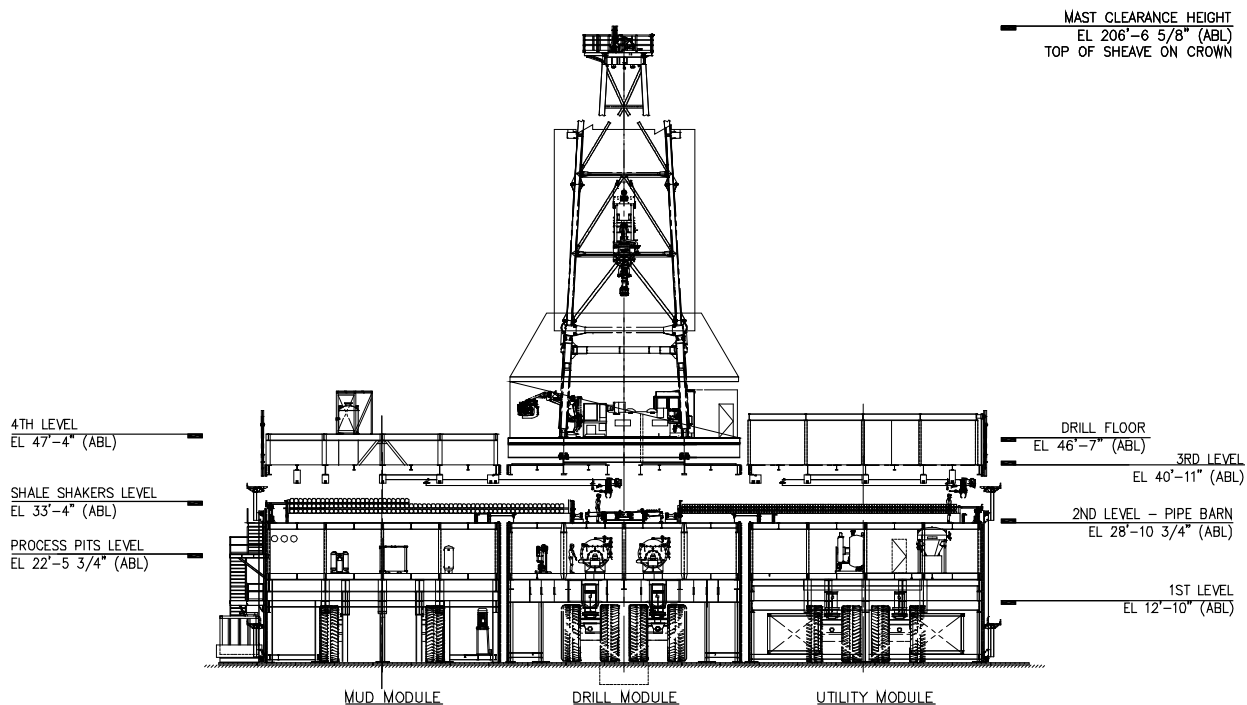
Find out more at parkerwellbore.com

©2021 Parker Wellbore. All Rights Reserved.

2103 CityWest Blvd Suites. 300-400
Houston, TX 77042



GENERAL ARRANGEMENT - PLAN VIEW



GENERAL ARRANGEMENT - AFT ELEVATION

Note: Equipment subject to client-specific requirements. No part of this document may be reproduced or transmitted without prior consent of Parker Drilling. Rev 03/19