

Year Built 2010

Mast
Type: Dreco Cantilever
Height: 142 ft.
Max Allowable Static Hook Load: 900,000 lbs.
Racking Capacity (5in DP): 15,000 ft.

Drawworks
Drawworks Make/Model: Continental Emsco C-1
Total Input Power: 1,500 hp
Number of Motors: 2
Drilling Line Size: 1-3/8 in.

Traveling Equipment
Traveling Block Make/Model: Continental Emsco RA-52-6
Hoisting Capacity: 500 tons

Substructure
Type: Dreco Slingshot
Rig Floor Height: 32 ft.
Clear Working Height: 25 ft.
Setback Capacity: 500,000 lbs.

Rotary Equipment
Top Drive Make/Model: TDS-11SA
Hoisting Capacity: 500 tons
Maximum Continuous Torque: 37,500 ft.-lbs.
Total Input Power: 800 hp
Number of Motors: 2
Rotary Table Make/Model: Gardner Denver 37-1/2
Size: 37-1/2 in.
Static Loading Rating: 650 tons

BOP System
Annular Preventer Make/Model:
Size: 29-1/2 in.
Pressure Rating: 500 psi
Annular Preventer Make/Model:
Size: 21-1/4 in.
Pressure Rating: 2,000 psi
Ram Preventer Make/Model: Single
Size: 26-3/4 in.
Pressure Rating: 3,000 psi
Ram Preventer Make/Model: Double
Size: 21-1/4 in.
Pressure Rating: 3,000 psi
Ram Preventer Make/Model: Single
Size: 21-1/4 in.
Pressure Rating: 3,000 psi



Gensets
Engine Make/Model: CAT D-398
Generator Make/Model: Kato 19720
Number of Gensets: 5

Power Distribution
Gen. Control Make/Model: Ross Hill-Model1400
Power Distribution: 600 VAC / 600 VDC

Mud Pumps
Pump Make/Model: Continental Emsco FB-1300
Total Input Power per Pump: 1,300 hp (2 motors) & 932 hp (1 engine)
Pressure Rating: 5,000 psi
Total Number of Pumps: 3

Mud Handling/Solids Control
Total Mud Volume: 1,518 bbls
Shale Shakers Make/Model: Derrick Hyperpool
Number of Shakers: 4
Desander Make/Model: Derrick In-Line 3-Cone
Number of Desanders: 1
Deslitter Make/Model: Derrick Round 20-Cone
Number of Desilters: 1
Degasser Make/Model: Swaco Horizontal
Number of Degassers: 1

Moving Systems
Type: Conventional
Load Capacity: N/A



Note: Equipment subject to client-specific requirements. No part of this document may be reproduced or transmitted without prior consent of Parker Wellbore. Rev 02/24

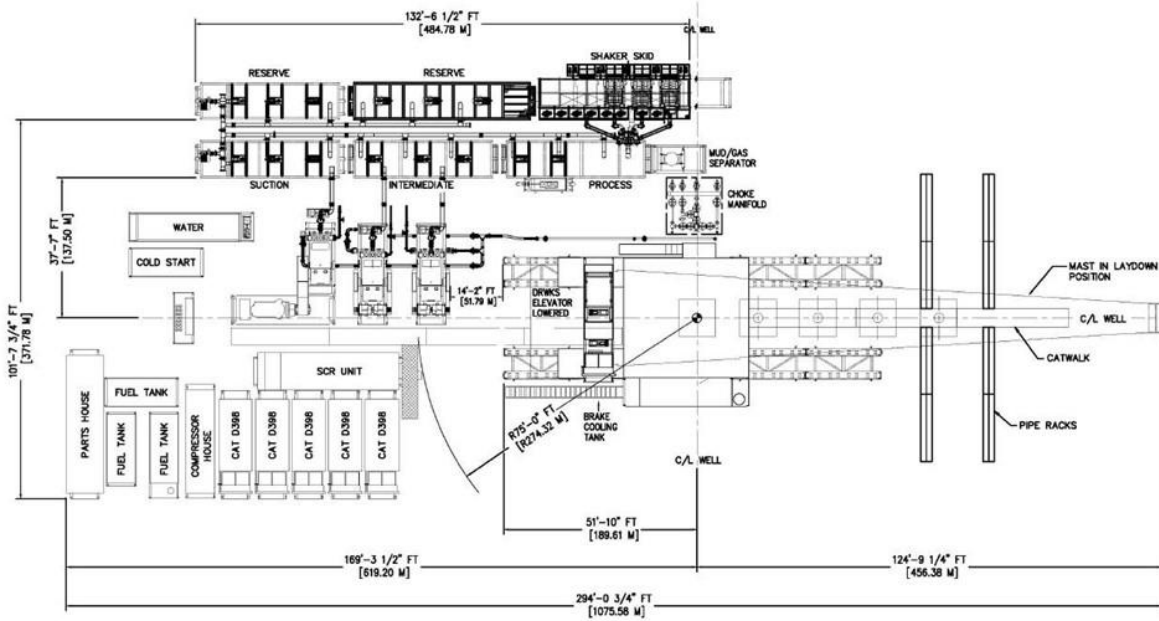
Energy. Well engineered.

Find out more at parkerwellbore.com

©2024 Parker Wellbore. All Rights Reserved.

2103 CityWest Blvd Suites. 300-400
Houston, TX 77042

Rig Plot Plan



Note: Equipment subject to client-specific requirements. No part of this document may be reproduced or transmitted without prior consent of Parker Wellbore. Rev 02/24