

An Ultra-Extended Reach Well Achieved a Drilling Depth of 53,000 feet with Parker's Casing Running Tool in the UAE

Overview

The UAE team successfully completed a 6 5/8" - 5-1/2" 13CR liner length of 47,500 ft. into a total depth well of 53,000 ft. for a major operator in the UAE. This achievement is due to the outstanding performance and reliability of our tools and our unwavering commitment to excellence in every job we undertake.

Challenges

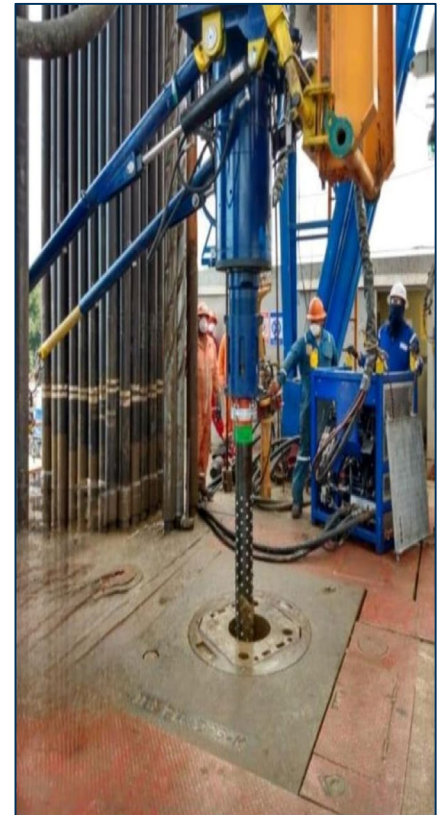
- A complex Ultra-ERD well posed significant challenges due to the extended reach and horizontal trajectories.
- Difficulty cleaning and managing the drill string and the complex trajectory well design and wellbore instability.
- Formation and navigation challenges required precise planning and execution to avoid stuck pipes and loss of slack off.

Solutions

- Parker's CRT (Casing Running Tool) could overcome the ERD deployment challenges.
- Deployment of a 31,778 ft. long liner into a 47,500 ft. well reaching a total depth (TD) of 53,000 ft.
- Provide advanced technical expertise and robust equipment to ensure smooth operations throughout the completion process.

Results

- Successfully reached a liner depth of 47,500 ft. setting a new milestone and benchmark in our operational capabilities.
- **Expert Team Coordination:** The success of this phase is due to the meticulous planning and coordination of our dedicated team. By leveraging their expertise and experience, we were able to anticipate potential challenges and implement effective solutions in real time.
- **Enhanced Performance:** The successful execution of this project highlights the exceptional performance of our CRT, reinforcing our reputation for delivering industry-best results in complex drilling environments.



Wellbore Construction

Tubular Running Services
Casing Running Tool

Location

Abu Dhabi, UAE

Energy. Well engineered.

Find out more at parkerwellbore.com

©2024 Parker Wellbore. All Rights Reserved.

